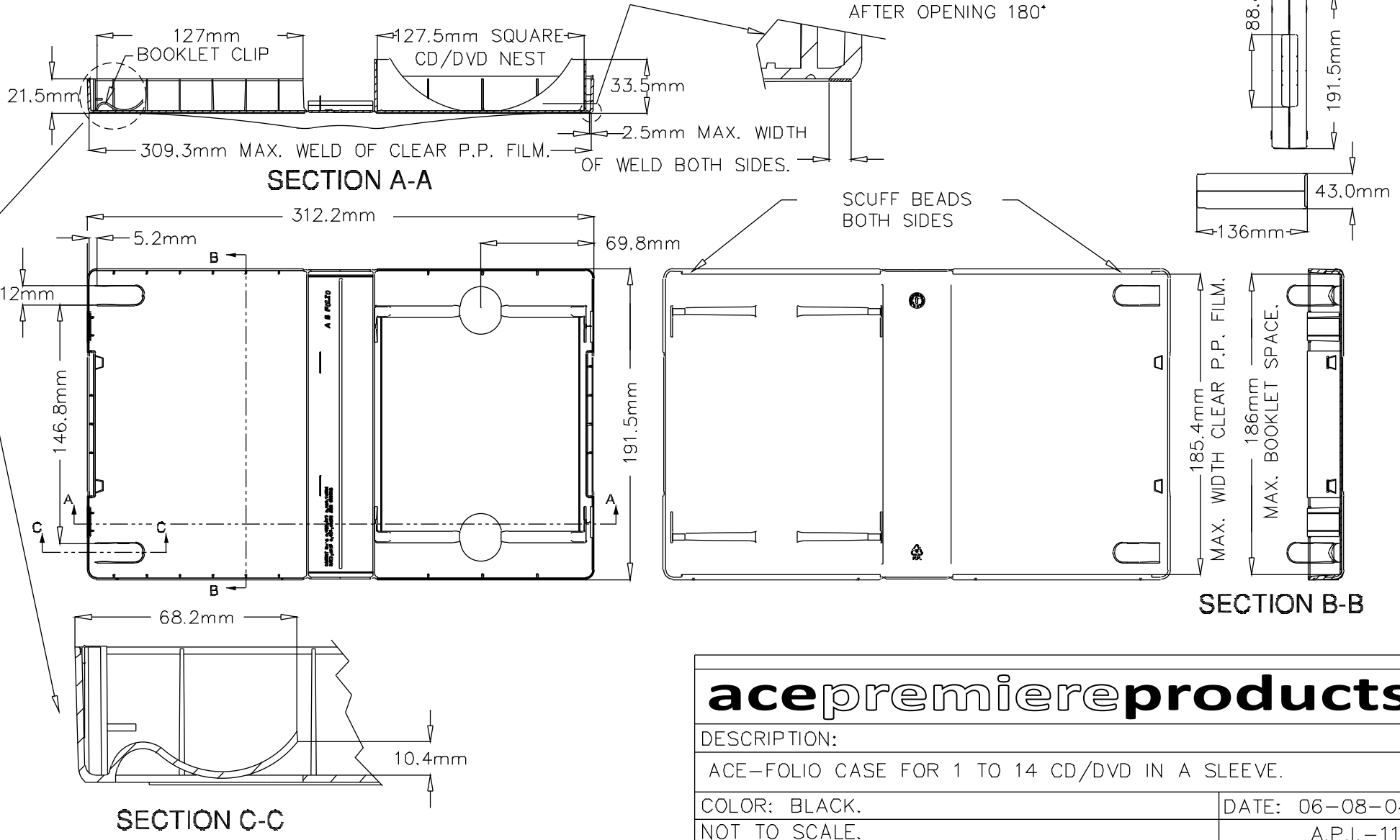


NOTES:

- 1 FOR ORDERING, PLEASE CONTACT ACE PACKAGING INC. SALES OFFICE AT GARDENA, CA USA.
TEL. 310-225-6658. FAX. 310-660-0210. E-MAIL: sales@ace-cases.com
- 2 MATERIAL: POLYPROPYLENE.
- 3 TEXTURE: MATTE INSIDE AND OUTSIDE.
- 4 COLOR: BLACK.
- 5 S.P.I. LOGO (5PP) WILL BE MOLDED OUTSIDE THE LOWER PORTION OF THE SPINE.
- 6 DIMENSIONAL TOLERANCES: + .039 in. (1mm).
- 7 MAX. BOOKLET CLIP CAPACITY: .236 in. (6mm).
- 8 WEIGHT: .194 lbs (88 grams).
- 9 FOR OUTER SLEEVE & BOOKLET SPECIFICATIONS REFER TO ACE-FOLIO SHEET No. API-110.
FOR 'Q' CARD & BOOKLET SPECIFICATIONS REFER TO ACE-FOLIO SHEET No. API-111.
FOR SLEEVE SPECIFICATION REFER TO SHEET No. API-112.

FORCE MUST NOT EXCEED 20 GRAMS TO PRESS LID OPEN 180°

MUST NOT EXCEED 10° SPRING-BACK AFTER OPENING 180°



acepremiereproducts

DESCRIPTION:	
ACE-FOLIO CASE FOR 1 TO 14 CD/DVD IN A SLEEVE.	
COLOR: BLACK.	DATE: 06-08-04
NOT TO SCALE.	A.P.I. - 113